



FC724

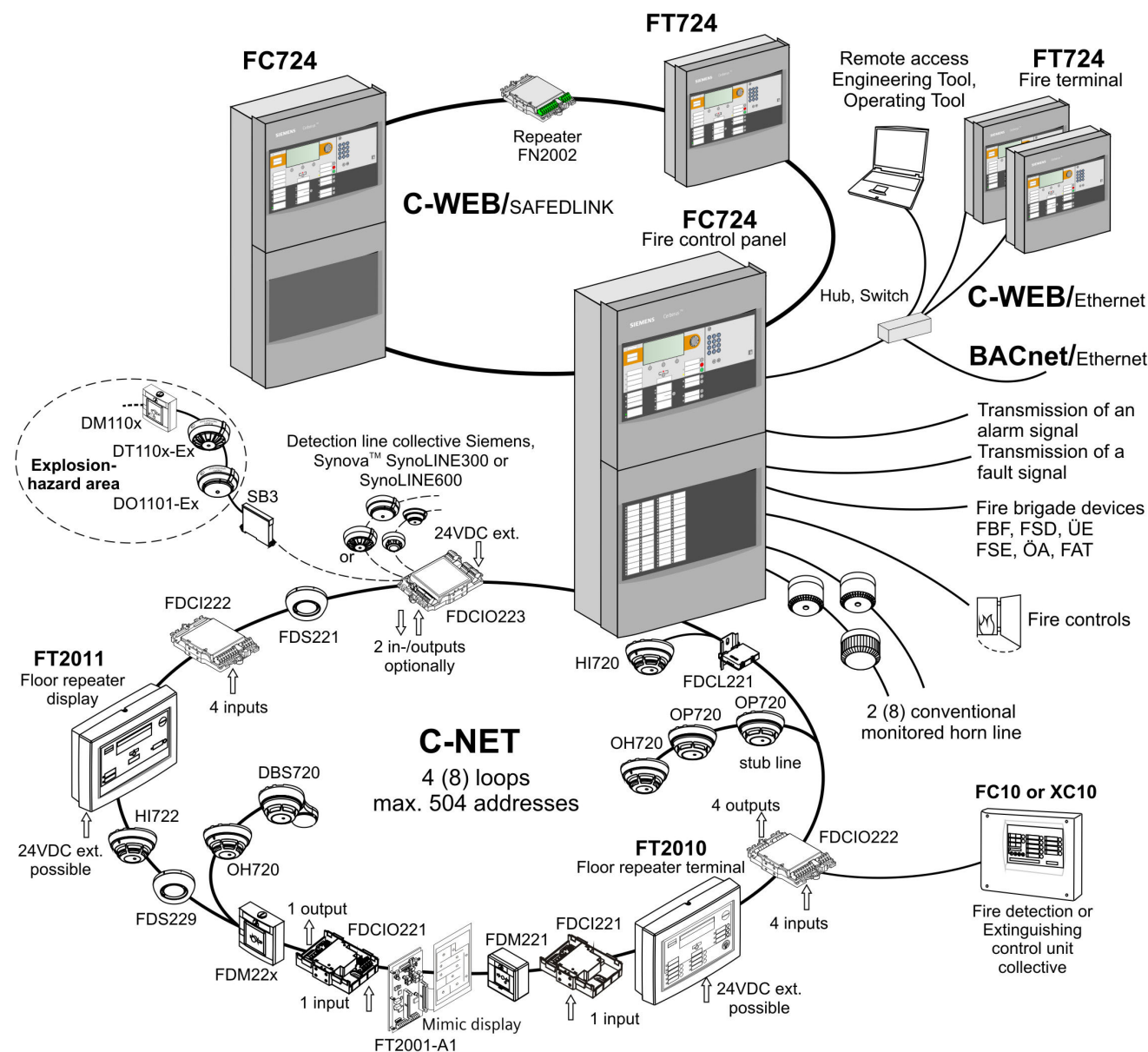
Cerberus® PRO

Fire control panel



Series FS720 (MP1XS)

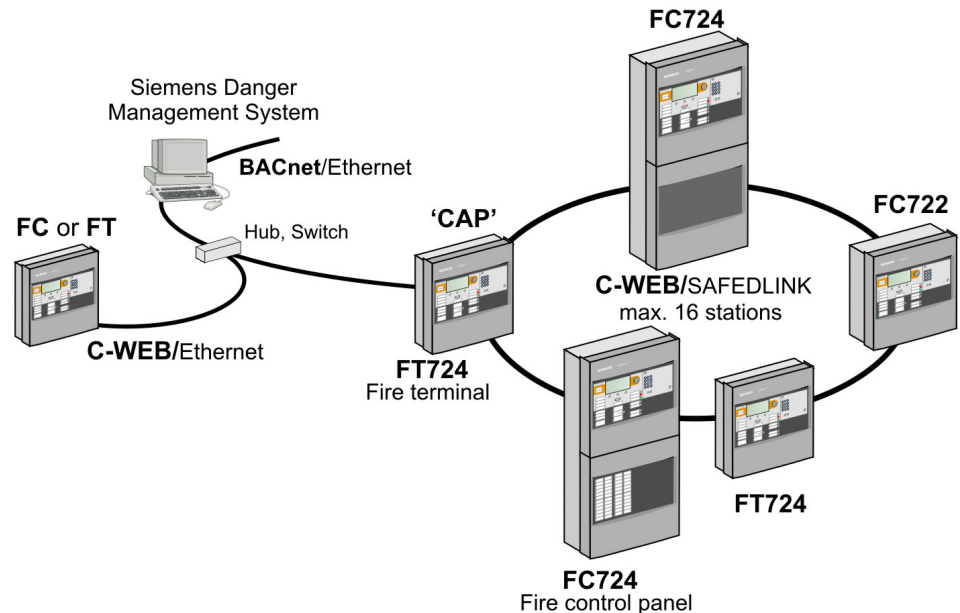
- Compact, prefabricated microprocessor-controlled fire control panel for the connection of up to 504 addresses
- Fire control panel can be used as stand-alone version or networked
- Up to 16 stations such as fire control panels and fire terminals (in any arrangement) can be connected in one network
- Integrated emergency operation function
- Redundant network node, degrade operation according to EN 54
- Fast Ethernet interface for heterogeneous network
- Integrated user-friendly operating unit
- Optional printer, key switch, LED indicators
- Slots for RS232, RS485 serial ports
- Emergency power supply for up to 72 h emergency power time
- Detection and automatic read-in (auto configuration) of all C-NET devices, providing immediate simple operation
- Processes signals from the Cerberus PRO FD720 detector series
- Floor repeater devices, alarm devices and mimic displays in the detector loop (C-NET)
- Flexible programming of complex applications and controls
- Stored data can be uploaded via remote access
- Firmware download of all processor controlled control panel components



Expansion to a complex fire detection system

The high-performance C-WEB makes it possible to network up to 16 FC724/722 fire control panels and FT724 fire terminals together as required. The innovative redundant network nodes not only set new standards in terms of failsafe characteristics but also for high-speed data transfer.

In addition, an Ethernet connection is available at each station. This Ethernet connection enables a maximum of 4 stations (inclusive Central Access Point 'CAP') to be networked together (not EN 54-compliant).



→ For details about system networking, please refer to product data sheet A6V10227649.

Characteristics

- The FC724 is a compact fire control panel with an integrated operating unit that can process signals from FD720 devices.
- The control panel can be used as a stand-alone unit or in a network.
- The control panel can be programmed with the user-friendly Cerberus-Engineering-Tool to create a system with great versatility.
- All detector lines are monitored for ground faults.
- Adaptation of the user text directly on the terminal or with the software engineering tool.
- Up to 2000 events can be stored according to various criteria.
- Automatic summer/winter time change.
- Connection of Siemens Danger Management System via BACnet

Operating unit

The following are located on the operating unit:

- CPU module and the electronics for the operating unit
- Ethernet connection
- Slots for RS232, RS485 modules and networking modules (SAFEDLINK)
- Space for 'Kaba' or 'Nordic' key switch
- Space for event printer

Periphery board

The following are located on the periphery board:

- Connection terminals for C-NET loops, remote transmission (alarm, fault), horn output, programmable control inputs/outputs, monitored alarm and fault output, degrade supply, power supply
- 2 plug-in position for loop extension (C-NET)

Power supply 150 W, emergency power supply

The power supply supplies the hardware and charges the batteries

- The batteries supply the emergency power in case of power failure

Housing

A pivoting mounting panel can be installed on the housing backplane to allow installation of:

- 1 fire brigade periphery module (for Germany)
- 1 sounder module (can also be mounted onto the U-rail TS35)

Configuration

The FXS7212 Cerberus-Engineering-Tool permits the system to be adapted to specific customers' requirements.

Application ranges

The FC724 is ideally suited for medium-sized applications, e.g. in industrial plant, regional banks, office complexes, etc. or when networked as part of much larger applications.

The FC724 can be used by the flexible cross-linking possibilities however also for extensive systems.

Operation

Each control panel has an integrated operating panel. Additionally the control unit can be operation for another separate FT724 operator terminal.

➔ For details and further information, please refer to product data sheet A6V10207898.

Overview of FC724 fire control panels

Housing (Comfort)

FC724-ZA



4 Loops
With power supply (150 W)
Battery capacity max. 26 Ah

FC724-ZE

With 48 indicator groups
with each one red + yellow LED



4 Loops
With power supply (150 W)
Battery capacity max. 26 Ah

Expansion

FH7202-Z3

Housing (Standard)
430 x 398 x 160 mm
Empty housing for various applications



e.g. for additional batteries,
operating add-on or

Event printer

Space for batteries
2 x FA2003-A1 (7 Ah) or
2 x FA2004-A1 (12 Ah) or
2 x FA2006-A1 (26 Ah)

FH7203-Z3

Housing (Comfort)
430 x 796 x 160 mm



e.g. for additional batteries,
operating add-on or
Event printer

Space for batteries
2 x FA2003-A1 (7 Ah) or
2 x FA2004-A1 (12 Ah) or
2 x FA2005-A1 (17 Ah) or
2 x FA2006-A1 (26 Ah)

FTO2001-A1

Event printer



Can be installed in all
panels except
RS232 module must be ordered
separately

Operating add-on

FCM7211-Y3

48 indicator groups
with each one red + yellow LED



For retrofitting

External printer

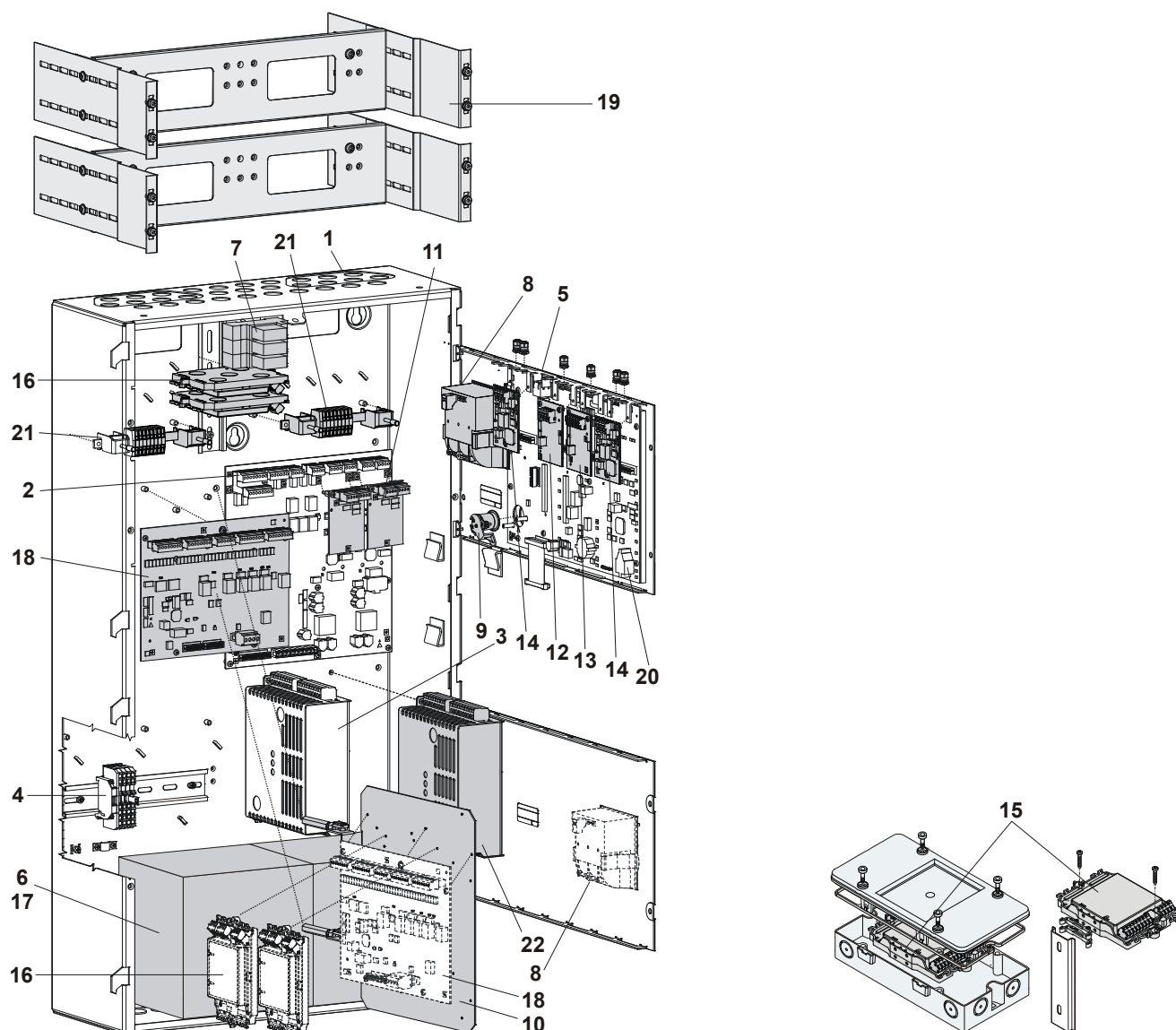
DL3750+

Matrix printer (Extern)
RS232 interface



RS232 module must be ordered
separately

Configuration of FC724 in housing (Comfort)



Basic equipment	Designation	Notes
1 Rear (Comfort)	FHA2003-A1	Pos. 1-5 → Basic equipment for each FC724-xx (Comfort)
2 Periphery board (4-Loop)	FCI2004-A1	
3 Power supply (SV 24V-150 W)	V24230-Z6-A2	
4 Mains terminals on DIN mounting rail TS35	–	
5 Operating unit	FCM72xx-xx	
6 Space for batteries	–	2 x 12 V / 7... 26 Ah
Expansion		
7 Relay module	Z3B171	Relay for fire controls
8 Event printer	FTO2001-A1	For event logging
9 Key switch (Kaba)	FTO2005-C1	For operating access rights
Key switch (Nordic)	FTO2006-B1	
10 Mounting plate	FHA2007-A1	E.g. for fire brigade peripheral
11 Loop extension (FDnet/C-NET)	FCI2003-A1	For loop extension of 2 to 4, number of addresses remains the same
12 RS485 module (isolated)	FCA2002-A1	For peripheral devices with RS485 port
13 RS232 module (isolated)	FCA2001-A1	For stations with RS232 port
14 Networking module (SAFEDLINK)	FN2001-A1	For networking various stations
15 Repeater (SAFEDLINK)	FN2002-A1	For the extension of the system bus C-WEB, max. 1 between 2 stations (mounting direct onto plane surface, onto a U-rail TS35 or in housings FDCH221)
16 Sounder module	FCA2005-A1	For split-up of 1 to 4 conventional horn lines

	Battery (12 V, 7 Ah, VDS)	FA2003-A1	
17	Battery (12 V, 12 Ah, VDS)	FA2004-A1	For emergency power supply
	Battery (12 V, 26 Ah, VDS)	FA2006-A1	
18	Fire brigade periphery module	FCI2001-D1	For Germany (FBF, FSD, ÜE, FSE, ÖA, KL)
19	19" mounting kit	FHA2016-A1	For the installation in 3 rd party housings
20	License key L1 or	FCA2012-A1	For Cerberus-Remote
	License key (L2)	FCA2013-A1	For Cerberus-Remote and BACnet
21	Cable kit (communication)	FCA2014-A1	For flexible cable connections to the modules on the operating unit
22	Power supply kit (150 W, B)	FP2005-A1	For additional power supply

Technical data

Mains voltage	230 VAC
Power supply	150 W
Operating voltage	21... 28.6 VDC
Operating current	max. 5 A
Battery capacity	2 x 12 V, 26 Ah
Battery monitoring	yes
Mains monitoring	yes
Connectable detector series	Cerberus PRO FD720 (C-NET)
Number of lines	
– Loops (with loop extension) or	4 (8)
– Stub lines	8 (16)
Number of addresses	max. 504
Integrated inputs/outputs	
– Relay outputs	
– RT alarm	1
– RT Fault	1
– Monitored outputs	
– Alarm	1
– Fault	1
– Horn	2
– Free programmable inputs/outputs	12
Operating unit	integrated
Plug-in position for RS232, RS485 serial ports	2
Plug-in position for networking modules	2
Plug-in position for loop extension	2
Mounting place for cable kit (communication)	2
Sounder module	max. 2
Ethernet connection RJ45	1
Operating temperature	-8... +42 °C
Storage temperature	-20... +60 °C
Humidity (no condensation permitted)	≤95 % rel.
Dimensions (W x H x D)	430 x 796 x 160 mm
Color	
– Housing	grey, ~RAL 7035
– Cover	grey, ~RAL-Design 050 00 00
Protection category (IEC 60529)	IP30
Approvals	
– VdS	G209077
– LPCB	pending

FC724

Siemens Schweiz AG, CH-6301 Zug
Date: see manufacturing date on the product
0786-CPD-20722

EN54-2, EN54-4
Fire control panel, Safety in case of fire
FC724
Technical data see Doc. A6V10210355

Details for ordering

	Type	Part no	Designation	Weight
Fire control panels	FC724-ZA	S54400-C30-A2	Fire control panel (4L)	18.280 kg
	FC724-ZE	S54400-C30-A3	Fire control panel (4L, 2LED)	19.200 kg
Expansion	Z3B171	BPZ:4843830001	Relay module 250 VAC / 10 A (1 relay)	0.042 kg
	FTO2001-A1	A5Q00010126	Event printer	0.250 kg
	–	A5Q00017619	Replacement printer rolls (10 rolls)	0.090 kg
	FTO2005-C1	A5Q00010113	Key switch (Kaba)	0.013 kg
	FTO2006-B1	A5Q00010129	Key switch (Nordic)	0.050 kg
	FHA2007-A1	A5Q00010151	Mounting plate	0.800 kg
	FCI2003-A1	A5Q00010136	Loop extension (FDnet/C-NET)	0.064 kg
	FCA2002-A1	A5Q00009923	RS485 module (isolated)	0.067 kg
	FCA2001-A1	A5Q00005327	RS232 module (isolated)	0.068 kg
	FN2001-A1	A5Q00012851	Network module (SAFEDLINK)	0.077 kg
	FN2002-A1	S24236-B2502-A1	Repeater (SAFEDLINK)	0.154 kg
	FCA2005-A1	A5Q00014866	Sounder module	0.140 kg
	FCA2014-A1	A5Q00023027	Cable kit (communication)	0.224 kg
	FCI2001-D1	A5Q00013100	Fire brigade periphery module	0.482 kg
	FH7202-Z3	S54400-B70-A101	Housing (Standard)	7.500 kg
	FH7203-Z3	S54400-B71-A101	Housing (Comfort)	15.000 kg
	FCM7211-Y3	S54400-F75-A1	Operating add-on (2xLED-ind.)	2.600 kg
	FHA2016-A1	A5Q00020179	19" mounting kit	3.000 kg
Additional power supply	FP2003-A1	A5Q00016005	Power supply kit (70 W)	0.650 kg
	FP2004-A1	A5Q00020825	Power supply kit (150 W) for installation in empty housing	1.366 kg
Batteries	FP2005-A1	A5Q00018779	Power supply kit (150 W, B)) for cascading	1.100 kg
	FA2003-A1	A5Q00019353	Battery (12 V, 7 Ah, VDS)	2.450 kg
	FA2004-A1	A5Q00019354	Battery (12 V, 12 Ah, VDS)	3.930 kg
	FA2005-A1	A5Q00019677	Battery (12 V, 17 Ah, VDS)	5.640 kg
	FA2006-A1	A5Q00019356	Battery (12 V, 26 Ah, VDS)	7.572 kg
Software license	FCA2012-A1	A5Q00018856	License key (L1)	0.010 kg
	FCA2013-A1	A5Q00018857	License key (L2)	0.010 kg
External printer	DL3750+	A5Q00023962	Matrix printer (Extern)	7.300 kg
Spare part	–	A5Q00023963	Black typewriter ribbon for matrix printer DL3750+	0.078 kg

Siemens Switzerland Ltd
Industry Sector
Building Technologies Division
International Headquarters
Fire Safety & Security Products
Gubelstrasse 22
CH-6301 Zug
Tel. +41 41 724 24 24
www.siemens.com/buildingtechnologies

© 2009 Copyright by
Siemens Switzerland Ltd

Data and design subject to change without notice.
Supply subject to availability.